



LINEA DETTAGLI D'ARTE

Cadoro

Finitura decorativa iridescente per interno

Iridescent interior decorative finish

made
in italy

Emozioni decorative

Decorative emotions

**san
marco**
SISTEMI VERNICIANTI PER L'EDILIZIA





0617



0642



0604



0605



0622



0641



0506



0621



0646



0645



0610



0628



0508



0507



0502



0626



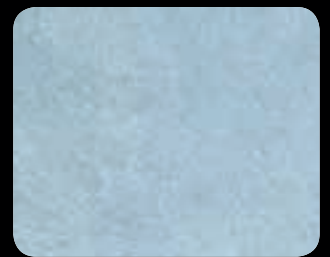
0620



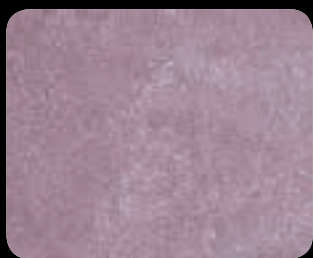
0619



0624



0634



0503



0504



0505



0509



0603



0608



0520



0521



0500



0630



0522



0523



0636



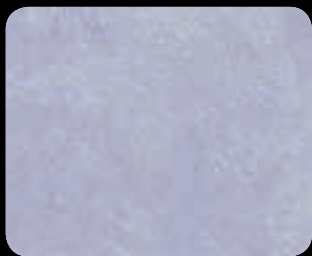
0501



0524



0525



0635



0639



0526



0527



0633



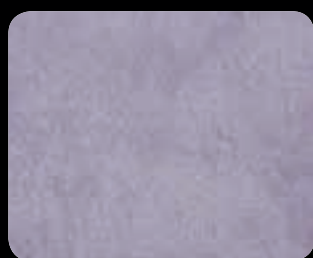
0638



0528



510

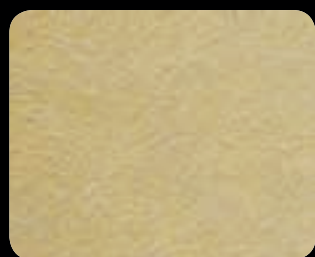


511



0529

Cadoro



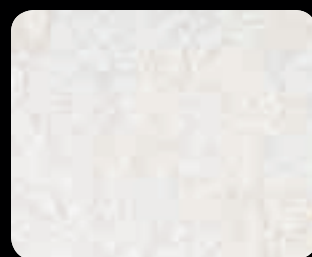
0672



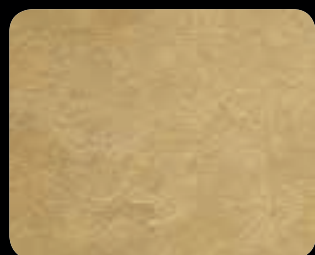
0656



0654



0070 **Base Argento**



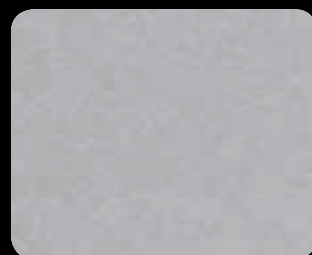
0671



0670



0665



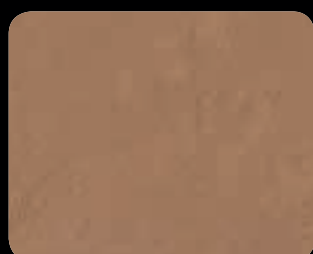
0170 **Base Alluminio**



0668



0667



0666



0180 **Base Ardesia**



0643



0661



0662



0190 **Base Oro**



0647



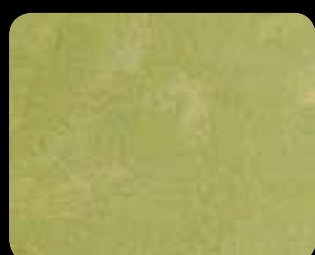
0660



0659



0150 **Base Bronzo**



0609



0669



0657



0160 **Base Rame**

Cadoro

Finitura decorativa iridescente per interno

Massima espressione di un'atmosfera esclusiva, enigmatica ed intensa, sintomo di una personalità forte e creativa. Preziosi dettagli policromi e iridescenti, pareti morbide e setose al tatto per reinventare gli spazi contemporanei, loft ricercati, interni privilegiati. Vasta gamma cromatica e perfetti mix di effetti decorativi, facili da realizzare. Libera la fantasia, plasma le superfici, crea modernità ideale per il design made in Italy. Cadoro viene applicato in due strati con resa indicativa di 4-6 m²/l a lavoro finito. Attrezzi: pennello, fratazzo inox-plastica.

Iridescent interior decorative finish

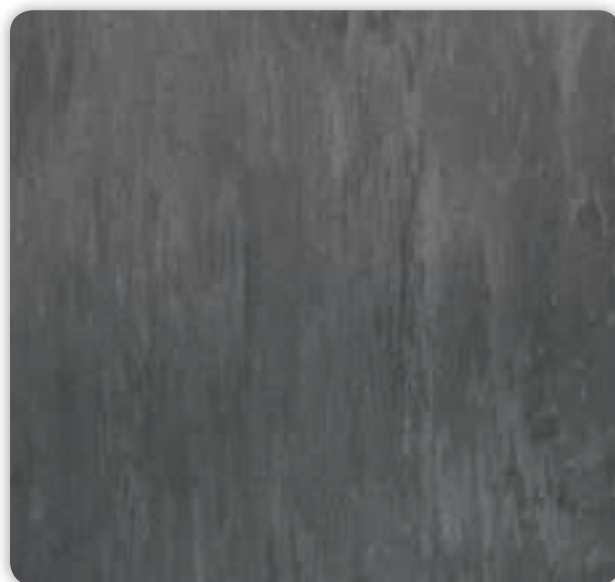
This is the product to create an exclusive, enigmatic and intense atmosphere denoting a strong and creative personality. Exquisite polychrome and iridescent details, walls that are soft and silky to the touch give a new look to contemporary surroundings, refined lofts and fine interiors. There is a vast range of colours and the possibility of a wonderful variety of decorative effects that are easy to obtain. A product that gives free reign to your imagination, smoothes the surfaces and creates ideal modernity for a made-in-Italy design. Cadoro is normally applied in at least two coats, with an indicative spreading rate of 4-6 m²/l based on two coats. Tools: brush, steel/plastic trowel.

Effetti - Effects



Effetto calce iridescente - Decorazione ottenuta applicando come fondo almeno tre strati di Grassello di calce. Livellare fino ad ottenere una superficie liscia ed uniforme. A supporto asciutto e lucidato applicare a fratazzo uno strato sottile di Cadoro base oro o di Abc riflessi.

Iridescent lime effect - Decorative coating obtained by applying at least three coats of the product Grassello di calce as base coating. Level until a smooth, uniform surface is obtained. When dry and glossy, apply a thin layer of Cadoro (gold base colour) or Abc riflessi using a trowel.



Effetto striato - Decorazione ottenuta con 2-3 strati di Cadoro Ardesia con fratazzo. In fase di essiccazione del 2° strato, eseguire la lavorazione in senso verticale.

Striated effect - Decorative finish obtained by applying 2-3 coats of Cadoro with trowel. As the 2nd coat is drying, carry out application in a vertical direction.



Colorificio San Marco SpA
Via Alta 10 - 30020 Marcon (VE) - Italy
Tel +39 041 4569322 - Fax +39 041 5950153
e-mail: info@san-marco.it
export@san-marco.it
www.san-marco.it
www.emozionidecorative.it

COMPANY WITH
QUALITY SYSTEM
CERTIFIED BY DNV
= ISO 9001 =